

# TRANSFORMATION ACCELERATOR COHORT



## THE TEXAS A&M UNIVERSITY SYSTEM





## **TRANSFORMATION ACCELERATOR COHORT**

May 24, 2022

Presented by:

Dr. Beverly Copeland, VP Student Affairs, Prairie View A&M University

Dr. Adrian Rodriguez, VP Student Engagement & Success, Texas A&M University-Corpus Christi

Dr. Rito Silva, VP for Student Affairs and Enrollment Management, Texas A&M University-Kingsville

Dr. Mari Fuentes-Martin, VP Student Success & Engagement, Texas A&M University-San Antonio

Dr. Kristen Harrell, Texas A&M University and Texas A&M System



## Outline for Today

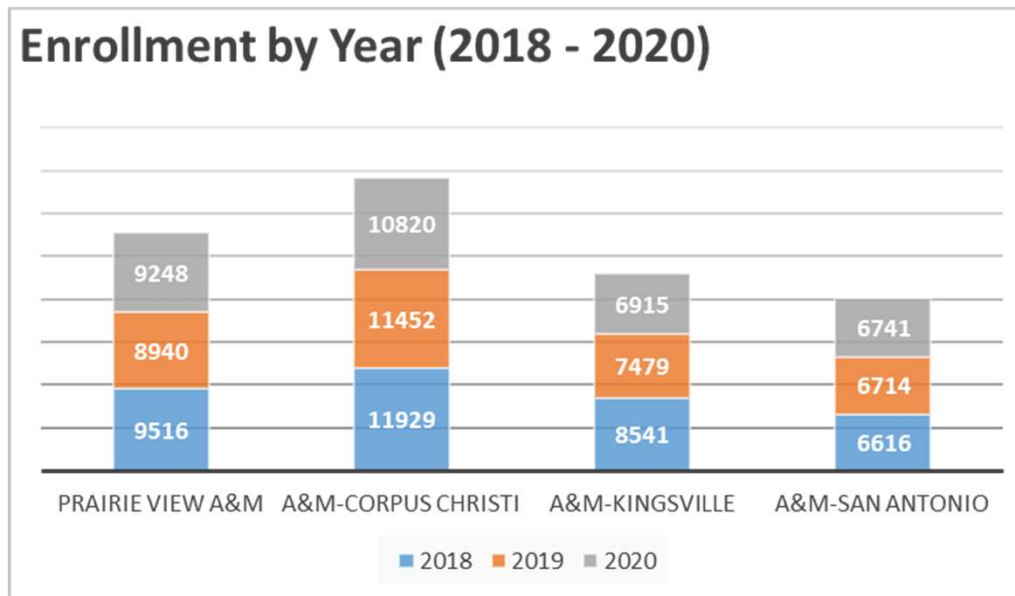
- Overview of AASCU Transformation Accelerator Cohort (TAC)
- What is the Postsecondary Data Partnership (PDP)?
- Panel Discussion
- What will TAC Student Success look like on your campus?
- What advice/guidance do you have for other System institutions
- Q&A

# TRANSFORMATION ACCELERATOR COHORT

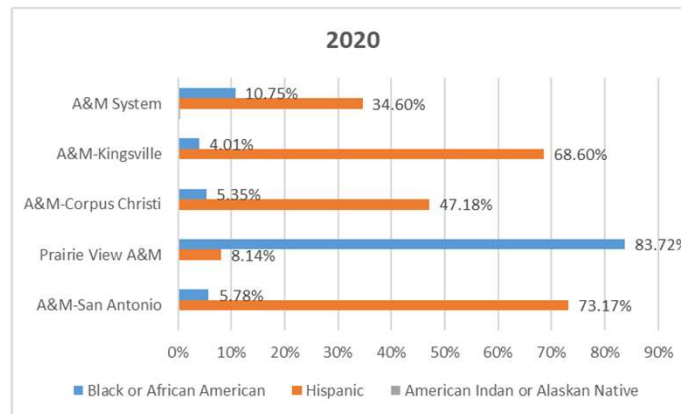
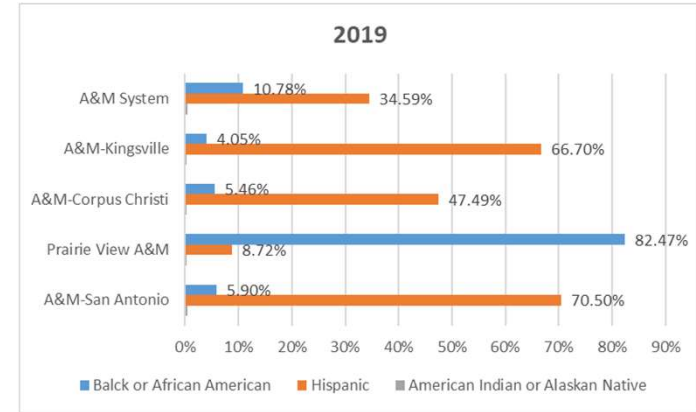
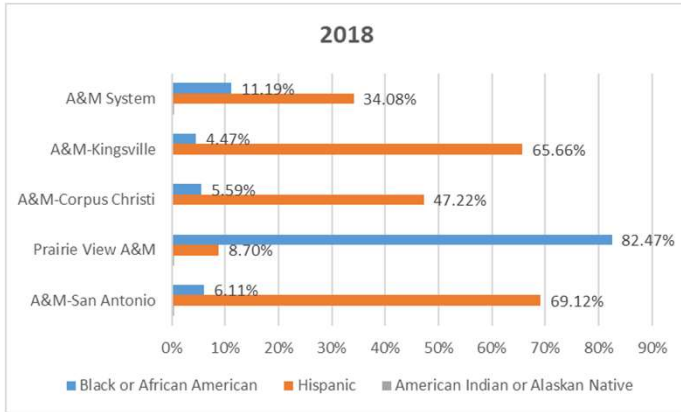


California State University-Fresno  
Central Connecticut State University  
College of Staten Island CUNY  
Metropolitan State University of Denver  
PASSHE/Bloomsburg University, Lockhaven University, Mansfield University (Penn.)  
SUNY College at Oswego  
Texas A&M University-Corpus Christi  
Texas A&M Kingsville  
Prairie View A&M University (Texas)  
Texas A&M University System  
Texas A&M University-San Antonio  
University of Hawaii at Hilo  
University of Maryland Eastern Shore  
William Paterson University (N.J.)

## Student Enrollment by Campus

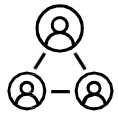


# Student Representation by Campus and by System

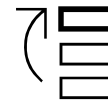


We're building upon these lessons to launch a  
***Transformation Accelerator***

Open to all AASCU members



Cohort of 15



Focused On Your Priorities



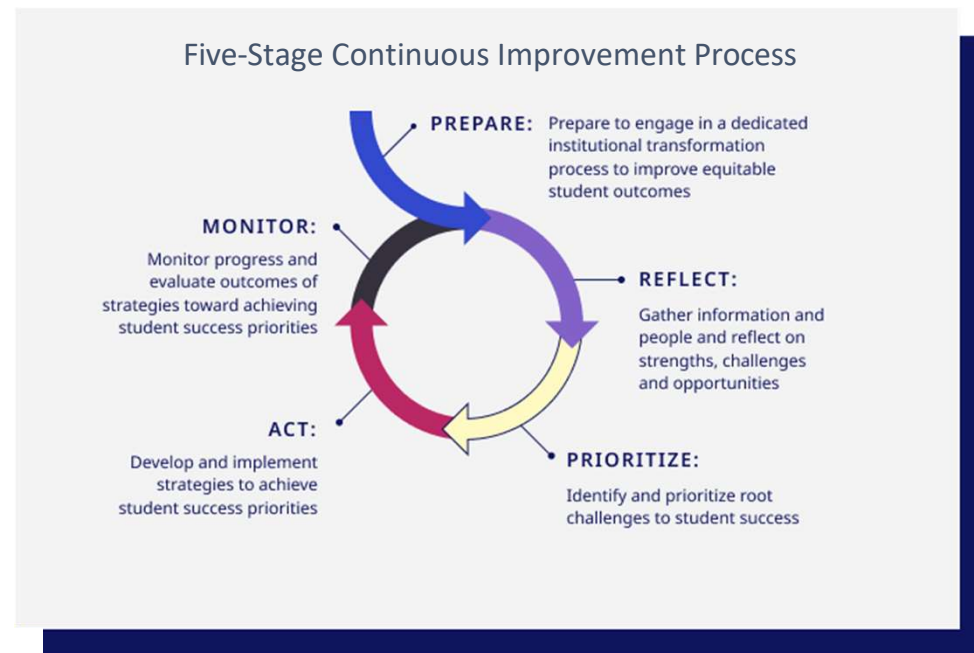
Team-Based



Two-Year Cycle

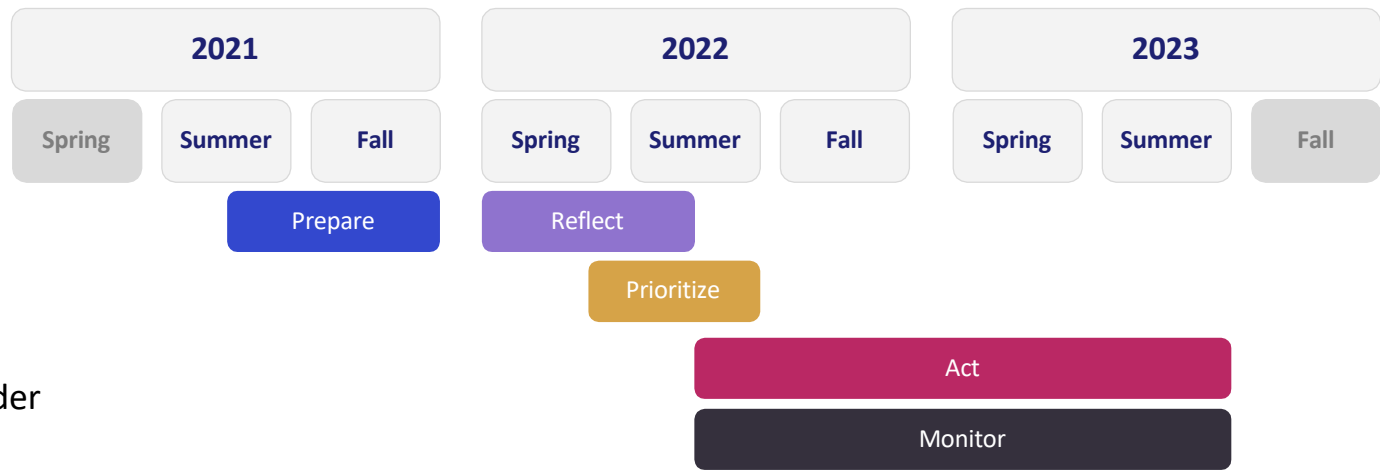
## Our *Transformation Accelerator Model*

Working as a team through a **structured five-stage continuous improvement process** – with AASCU’s facilitation, tools, and connections to field experts – can accelerate your journey to equitable student success.





# Timeline & Program Details



**Required Roles:**

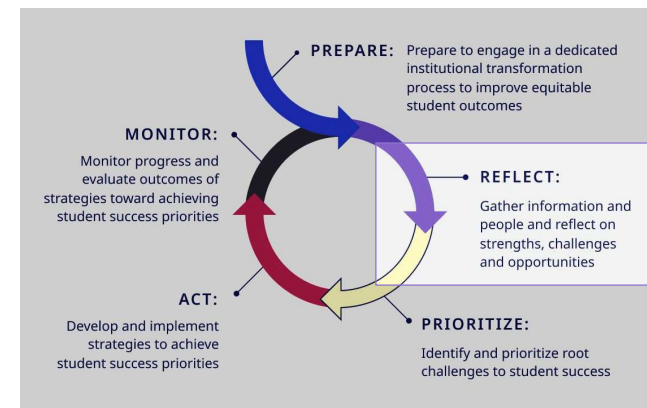
- President
- Provost/CAO
- IR/Data Lead/CIO
- Campus Team Leader

**Most meetings will be held virtually with at least one in-person**

**All services are included in the grant funding, with the exception of travel to one meeting per year for your team.**

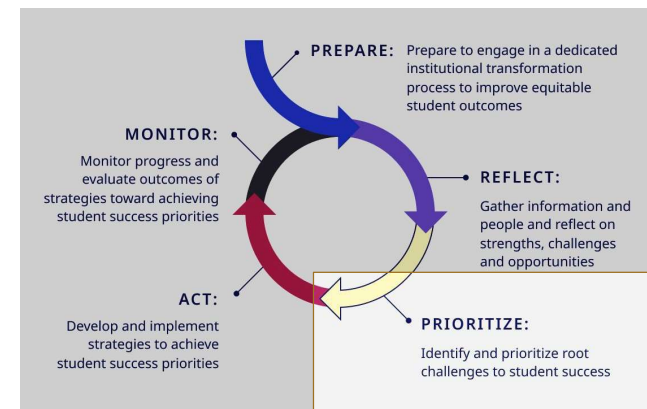
## Reflect

- Explore **momentum & barriers** across campus using the *Institutional Transformation Assessment*
- **Disaggregate key performance indicators** of student success to explore equity gaps
- **Elevate the student voice** and map the student experience to help stay student-centered and test assumptions
- **Reflect with AASCU & other cohort members** on themes and insights across the cohort



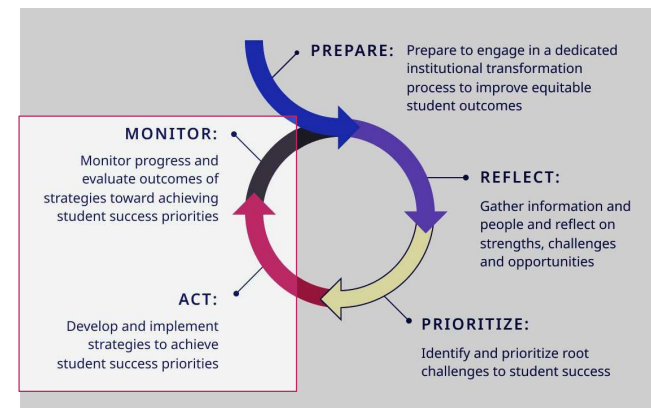
## Prioritize

- Articulate a student success Priority that fits your context and helps **connect vision → evidence → action**
- **Strengthen casemaking efforts** necessary to recruit cross-campus partners, engage leaders across divisions in transformational work, and avoid initiative fatigue
- **Set clear targets** for high-level student outcomes metrics



## Act & Monitor

- **Explore potential strategies** with AASCU and subject matter experts
- **Receive targeted technical assistance** to meet your institutional priorities
- Strengthen formal and informal continuous improvement practices to **sustain transformational processes and celebrate accomplishments**
- **Track progress** toward key performance indicator targets and adjust along the way



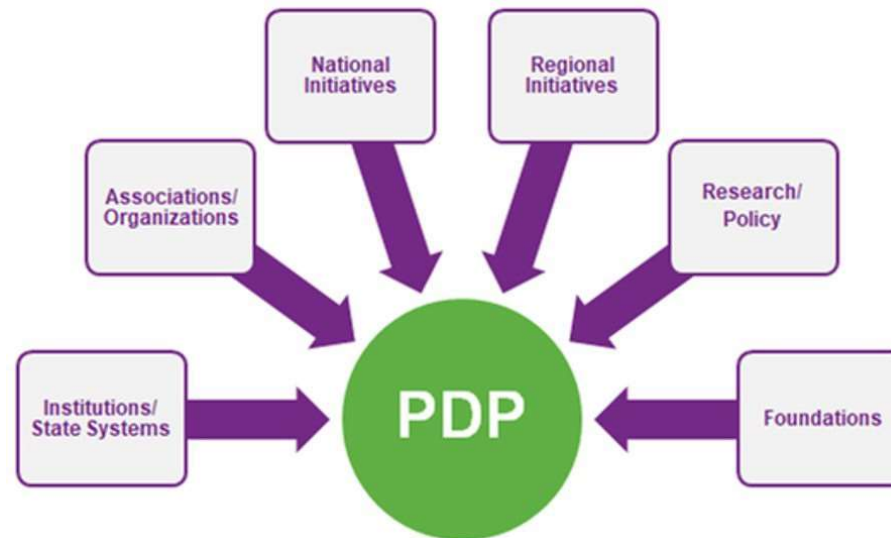
# What is the PDP?

Transformative way for your institution to measure and report student progress and success. The Postsecondary Data Partnership (PDP) empowers your institution with more **comprehensive data**, easier **analysis & insights**, centralized **reporting**, and better **visuals** to help you **understand and improve student outcomes**.



# What is the PDP?

The PDP is a collaborative housed at the NSC. Institutions/states/systems can submit student outcomes & share it with others within the PDP.



## PDP Benefit 1: Tableau Interactive Dashboards

- **Overview:**
  - Executive Summary
  - Enrollment
- **Early momentum indicators:**
  - Credit accumulation rate
  - Credit completion ratio
  - Gateway course completion
  - Term to Term
- **Outcomes over time:**
  - Persistence/retention
  - Transfers
  - Outcome measures
  - Credentials conferred and time to credential



## PDP Benefit 1: Tableau Interactive Dashboards

### Filters:

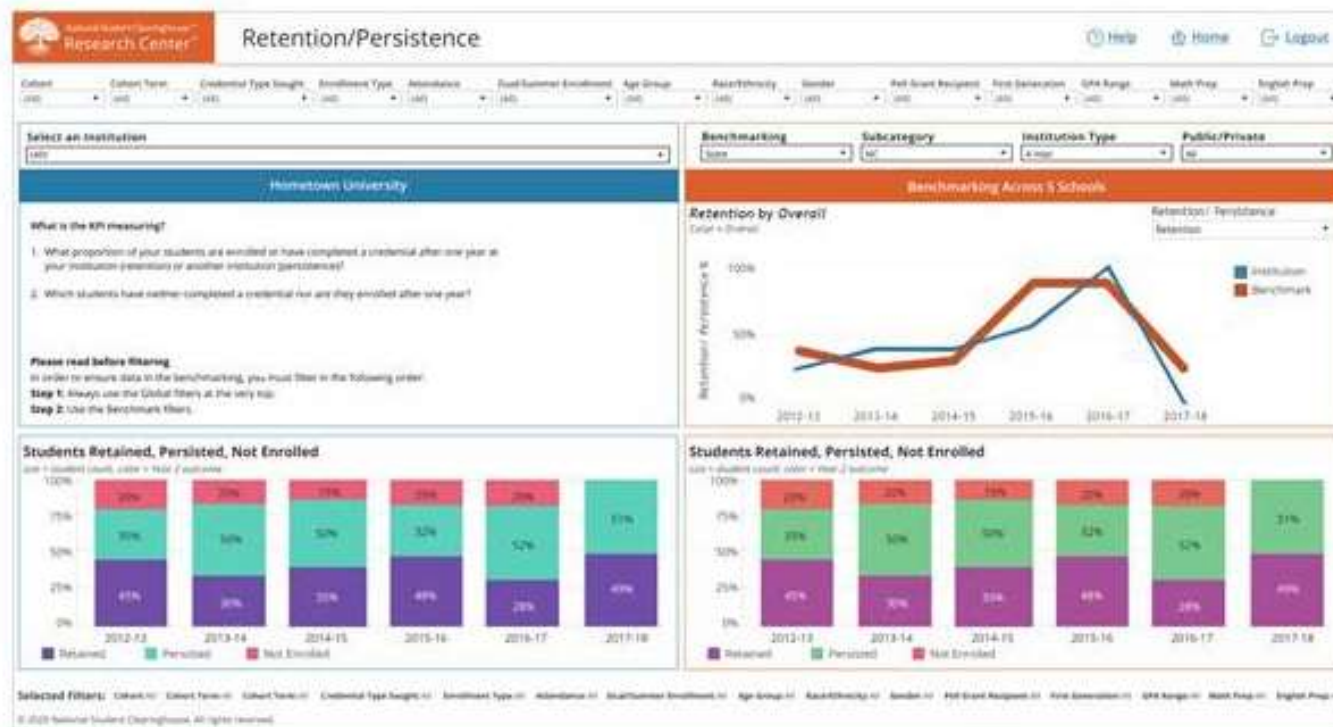
- Cohort
- Cohort Term
- Credential Type Sought
- Age
- Race/Ethnicity
- Gender
- Enrollment Type
- Attendance
- Dual/summer Enrollment
- Pell
- First Generation
- GPA
- College Prepared Math and English



Dig into the data to look at equity gaps



# PDP Benefit 2: Benchmarking Dashboards

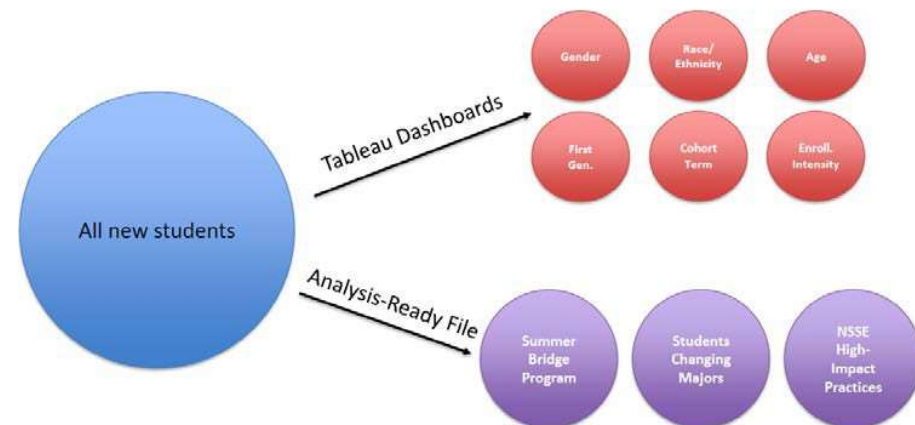


## PDP Benefit 3: Analysis-Ready Files

- Allows you to create your own college-defined cohorts and conduct analysis
- Match the data to other information sets, such as early alert data and predictive analytics



### Deeper Exploration with the Analysis Ready File



## PDP Benefit 4: Course-Level Analysis-Ready Files

- One row per course
- Detailed course-level data for up to 8 cohort years
- Delivered twice a year

### *Data Elements in Course-Level A/R*

Course Prefix	Math or English Gateway	N of Credits Earned
Course Number	Co-Requisite Course	Delivery Method
Section ID	Course Begin Date	Core Course
Course Name	Course End Date	Core Course Type
Course CIP	Grade	Core Competency Completed
Course Type	N of Credits Attempted	



## TAC Workshops

- Data Component (PDP) and Institutional Transformation Assessment (ITA)
- The Student Voice (how to use student assessment for continuous quality improvement)
- Equity Minded Sensemaking (data analysis)



## Symposium Panel Discussion

- How did your campus become involved in the TAC?
- Who is the lead on your campus and what has your role been?
- What will TAC Student Success look like on your campus?
- What advice/guidance do you have for other System institutions?
- Q&A



# Thank You!!!

Selected slides courtesy of AASCU